

Your
Regulatory
Partner

QA Advis Free Webinar
Usability Engineering
according to IEC 62366-1

QA
Advis

QAdvis – Key competence areas

QMS In-the-cloud

Turn Key QMS
Digital Signatures
Efficient and Lean

System Development

Product Software Validation
Computer Systems Validation
Risk Management
Verification and Validation
Process Validation

European Authorised Representation

Providing European representation for non-EU MedTech manufacturers
Founding member of EAAR (European Association of Authorized Reps)

UK Responsible Person
Founding member of UKRP Association

Training/Courses

CE-Marking, MDR, IVDR
ISO 13485 & QSR & MDSAP
IEC 62304 & IEC 82304-1
IEC 60601-1
IEC 62366-1
Risk Management
And more...

Agile, Lean and Six Sigma

Training and consulting in cooperation with US partner

QA&RA/Clinical Consulting

Interim Management, Expert Advise
Audits/Mock audit/Due Diligence
Warning Letters, Compliance Projects
PMA, 510k, CE-Marking, Tech Doc
Global Regulatory Support
Clinical Evidence, Clinical evaluations
Vigilance, Recalls, Post market

Presentation of the speaker – Cilla Lundevall

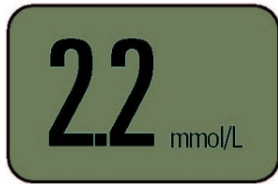


- Senior Quality and Regulatory Consultant @ QAdvis
- MSc EE & Medical Radiation physics
- 24 years in Medical Device Industry
- 20 years in Medical Device QA
 - V&V
 - QA/RA Consultant
 - PRRC, Head of QA/RA



Usability and Medical Devices

Some examples from UPAXA (The User Experience Professionals Association)



- Glucose meter recall – poor visibility decimal point
- Monitoring device recall - ineffective alarm system
- *“In 2008, the FDA recalled an ultrasound system because the graphics made users misunderstand the image orientations of the patient’s left and right sides”*

Ref: <http://uxpamagazine.org>

Agenda

1. Regulations & Standards

2. Overview & Definitions

3. The Usability Engineering Process

4. Q&A

Regulatory Context

MDD
Medical Device Directive

AIMDD
Active Implantable
Medical Device Directive

IVDD
In Vitro Diagnostic
Medical Device Directive



MDR
Medical Device Regulation

GSPR 5

IVDR
In Vitro Diagnostic Medical
Device Regulation

© 2021 QAdvis AB

Regulations and Standards (EU)

EU Commission

National Laws

Legally
binding

MDR

IVDR

GSPR 5

MDR = the Medical Device Regulation (Regulation 2017/745)
IVDR = the In Vitro Medical Device Regulation (Regulation 2017/746)

© 2021 QAdvis AB

MDR / IVDR Requirements on Usability – GSPR 5

In eliminating or reducing risks related to use error, the manufacturer shall

Design for patient safety

Design for lay, professional, disabled or other users

Reduce as far as possible the risks related to the ergonomic features of the device and the environment in which the device is intended to be used

technical knowledge

experience

education

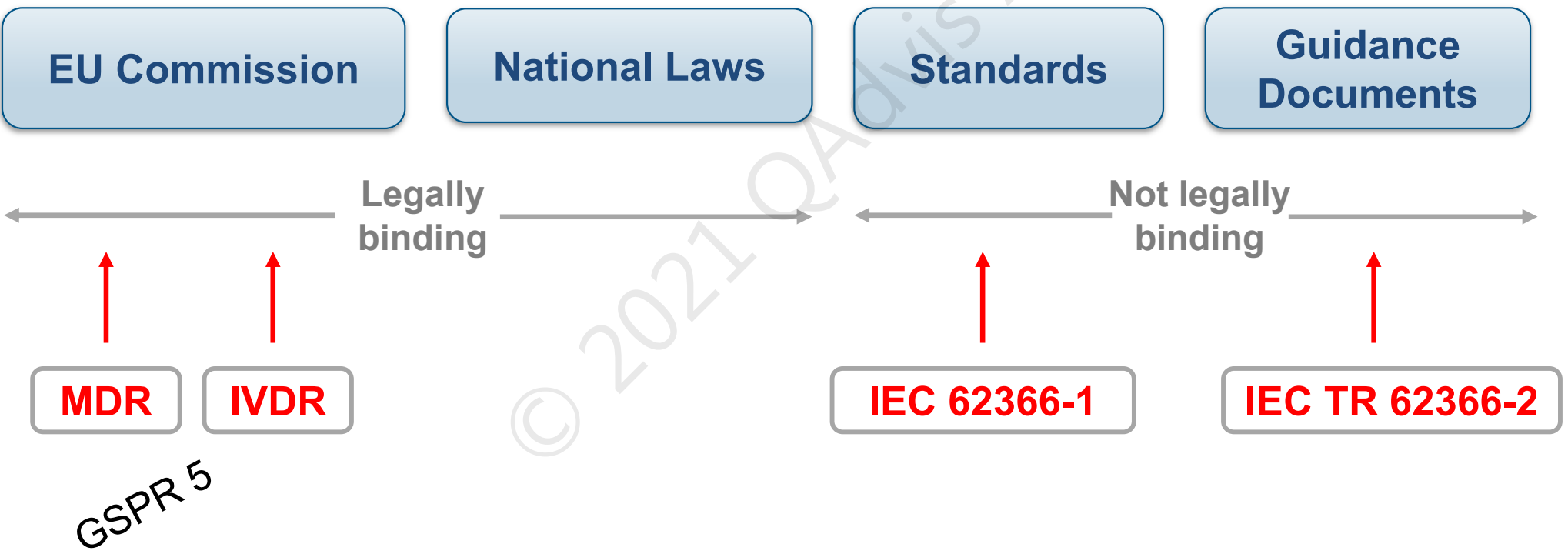
training

medical and physical conditions

use environment

GSPR = General Safety and Performance Requirement

Regulations and Standards (EU)



MDR = the Medical Device Regulation (Regulation 2017/745)
IVDR = the In Vitro Medical Device Regulation (Regulation 2017/746)

Usability

IEC 62366-1:2015/A1:2020
IEC TR 62366-2:2016

 IEC 62366-1
Edition 1.0 2015-02

**INTERNATIONAL
STANDARD**

**NORME
INTERNATIONALE**

Medical devices –
Part 1: Application of usability engineering to medical devices

 IEC TR 62366-2
Edition 1.0 2016-04

**TECHNICAL
REPORT**

Medical devices –
Part 2: Guidance on the application of usability engineering to medical devices

EUROPEAN STANDARD
NORME EUROPÉENNE
EUROPÄISCHE NORM

EN 62366-1:2015/A1

August 2020

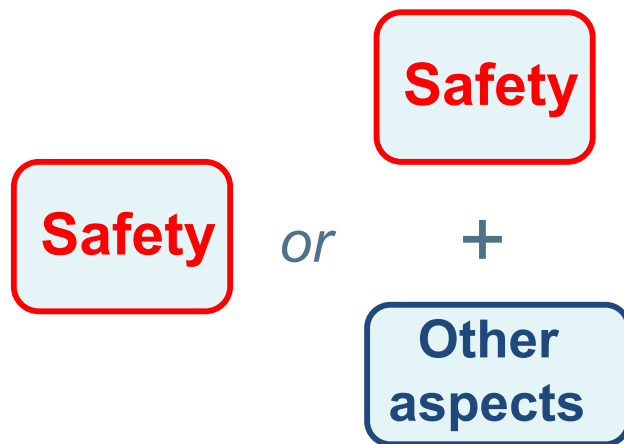
Your
Regulatory
Partner

OVERVIEW OF 62366-1
& DEFINITIONS

*QA*adv*is*

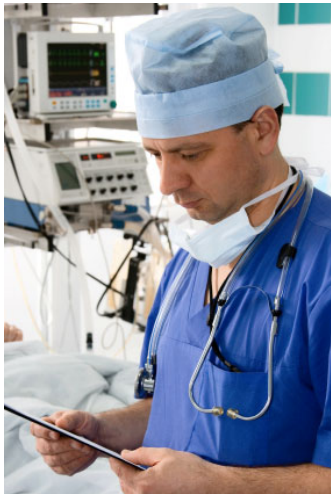
© 2021 QAadv*is* AB

Focus on Safety



*Manufacturers can choose to implement a usability engineering program focused narrowly on **safety** or more broadly on **safety and other attributes***

Definitions – User - Usability



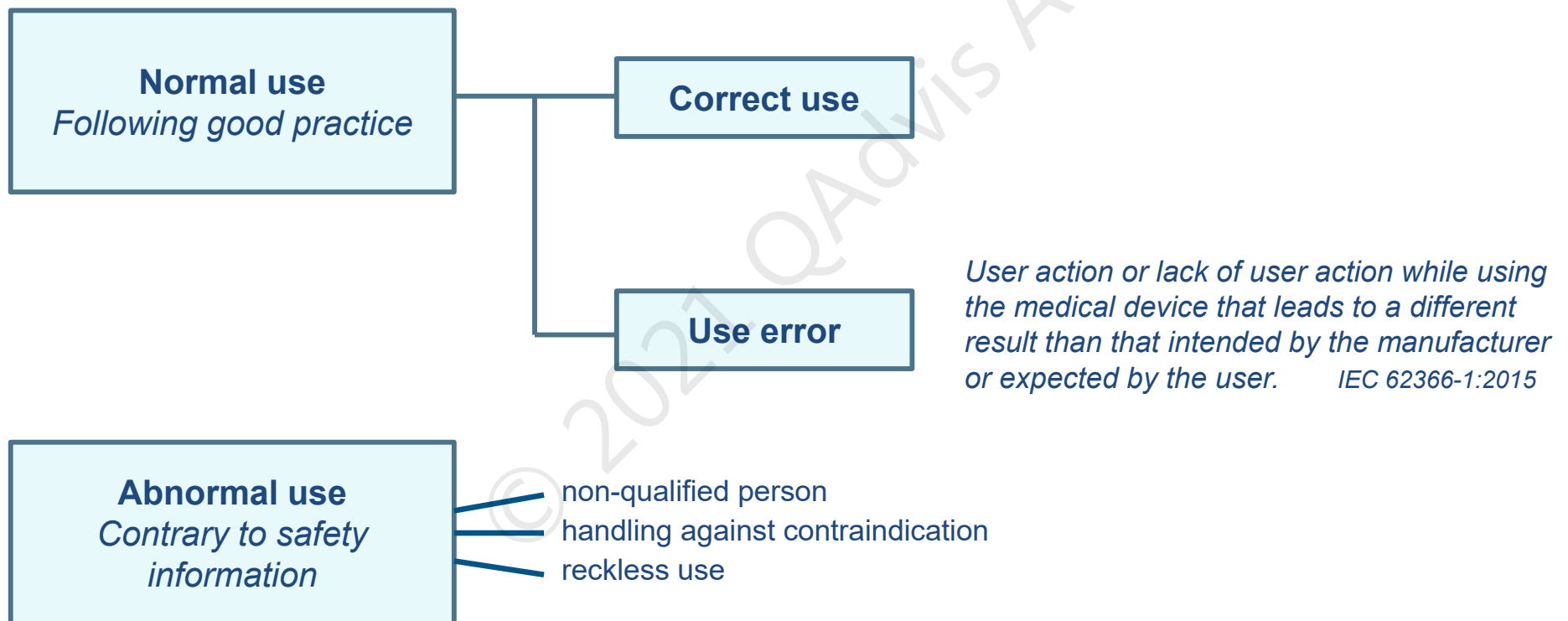
User Person **interacting with** the medical device
E.g. nurses, physicians, laboratory technicians, patients, service personnel

Usability Characteristic of the user interface that **facilitates use** and thereby establishes effectiveness, efficiency and user satisfaction in the intended use environment

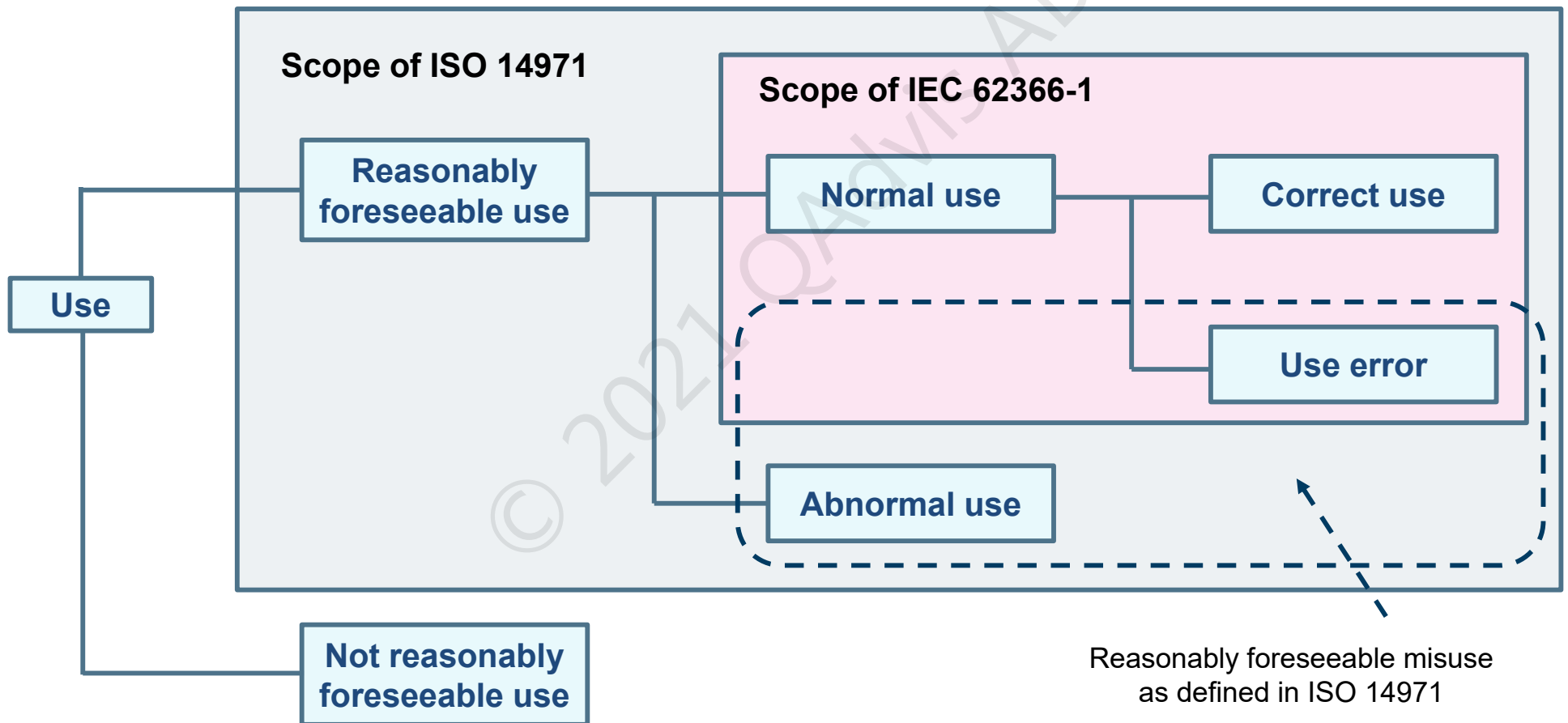
effectiveness = *accuracy and completeness with which users achieve specified goals*

efficiency = *resources expended in relation to effectiveness*

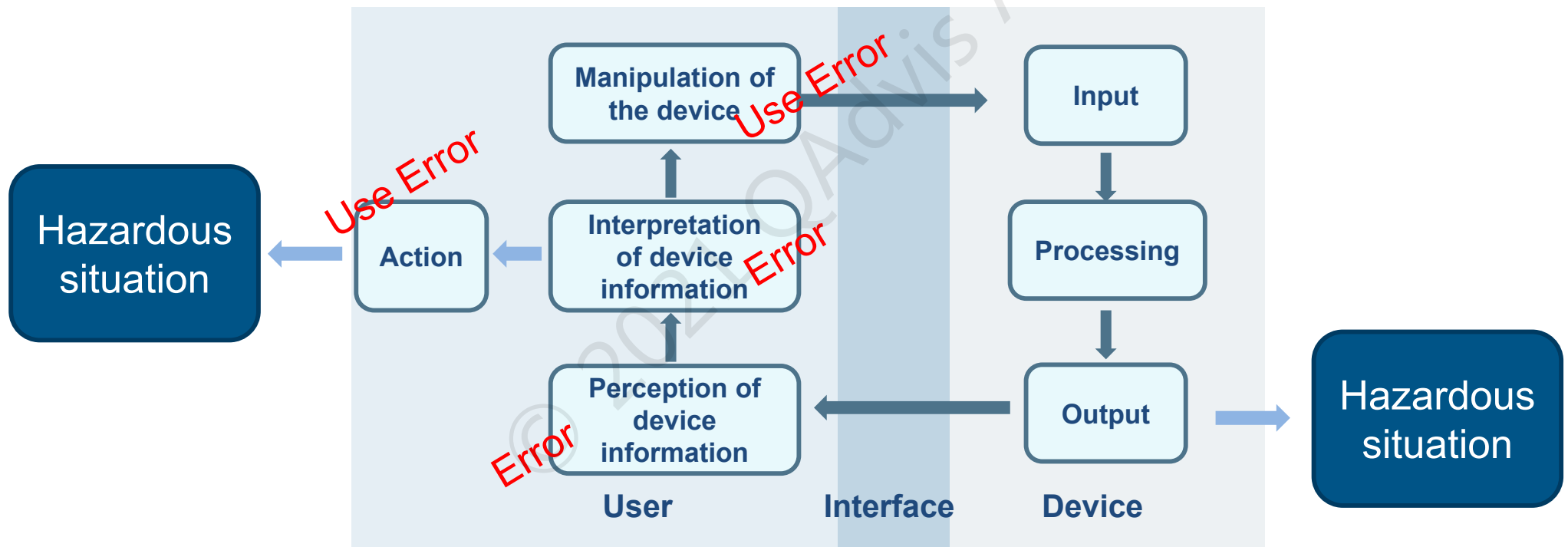
Definitions – normal/abnormal use, use error



Definitions – normal/abnormal use, use error



Hazardous situations



User Interface of Unknown Provenance (UOUP)



User interface or part of user interface of a medical device previously developed for which adequate records of the usability engineering process of this standard are not available

Your
Regulatory
Partner

THE USABILITY ENGINEERING PROCESS

*QA*Adv*is*

© 2021 QAAdv*is* AB

The Usability Engineering Process – General

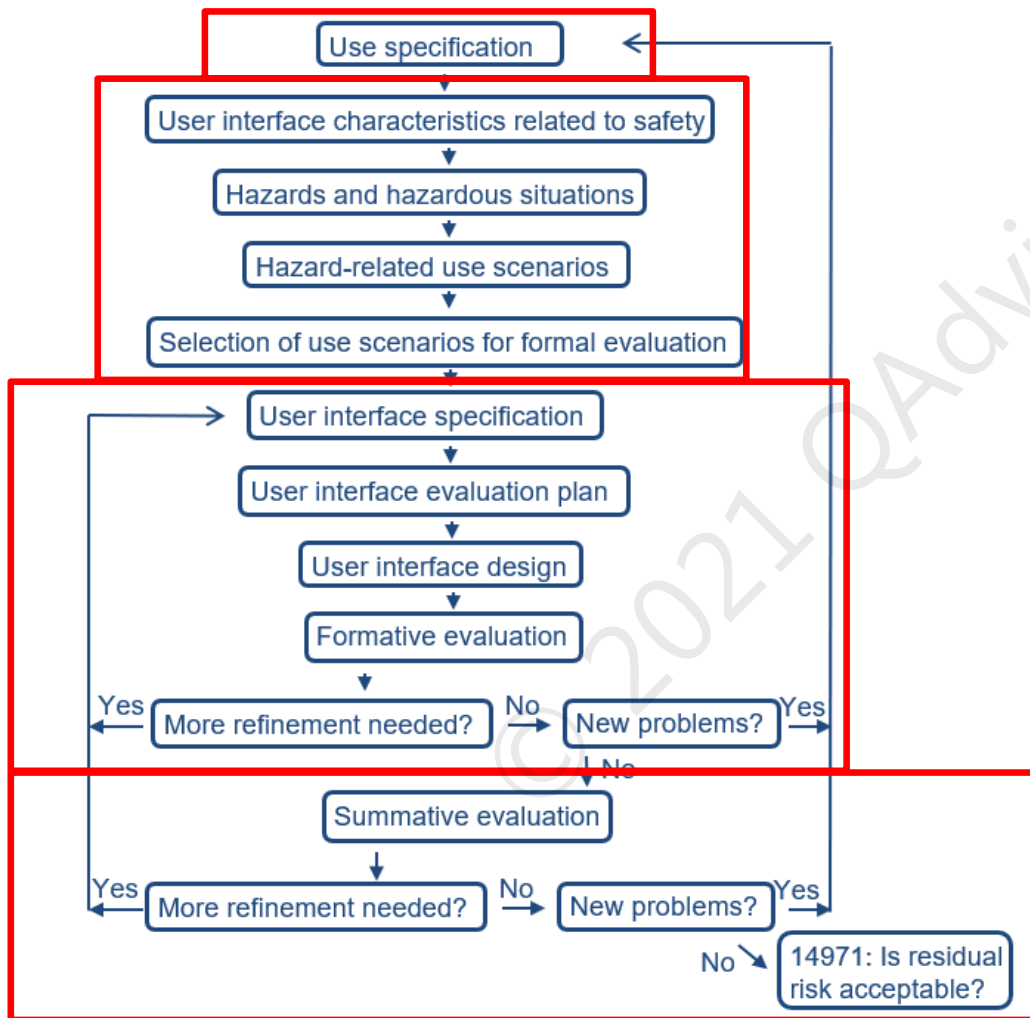


- The manufacturer shall **establish, document** and **maintain** a *Usability Engineering Process* to provide **safety** for the patient, users and others
- The process shall address **user interactions** with the medical device according to the accompanying document, including, but not limited to:
 - **Transport**
 - **Storage**
 - **Installation**
 - **Operation**
 - **Maintenance & repair**
 - **Disposal**

Tailoring of the Usability Engineering Process



The Usability Engineering Process - Components



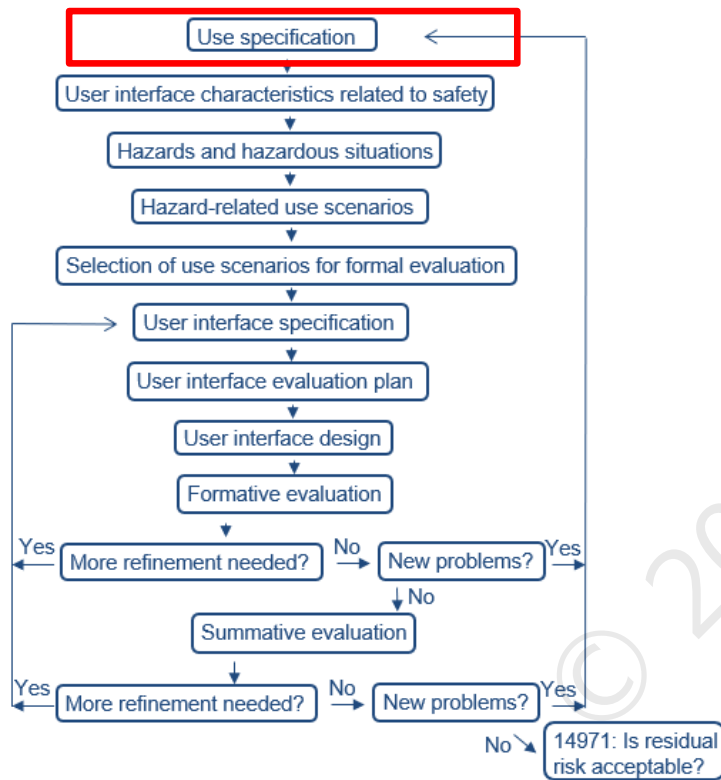
Define important characteristics

Investigate risks

Design & development

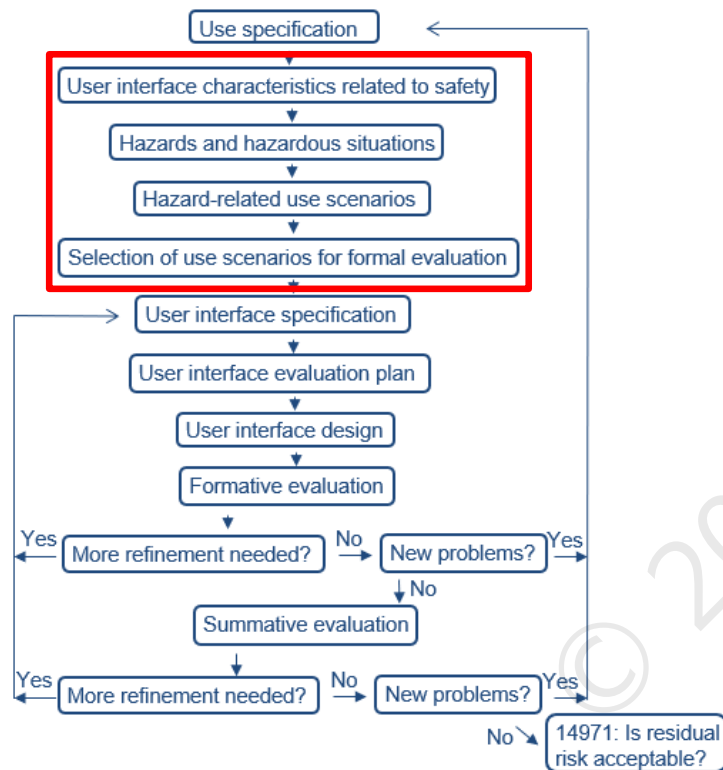
Validate and evaluate residual risk

The Usability Engineering Process - Input



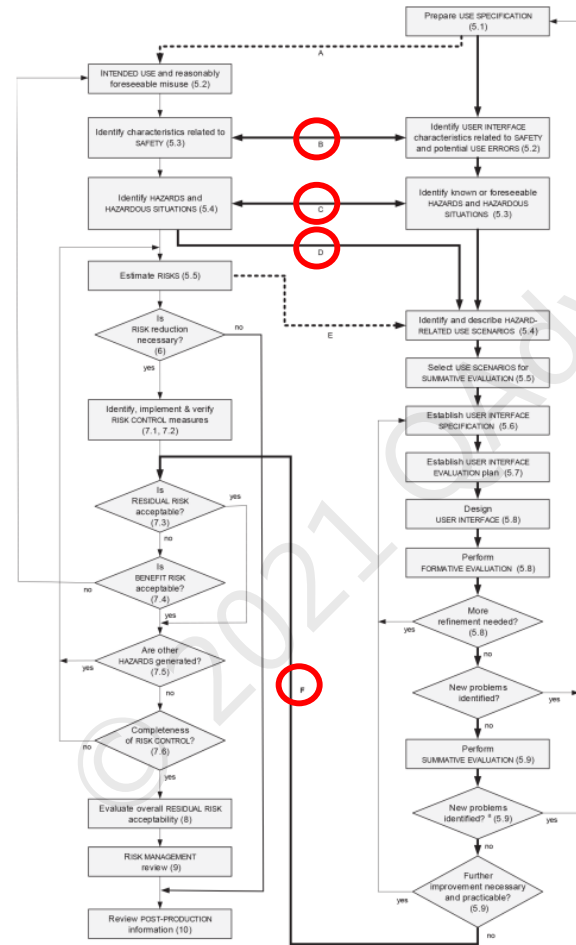
1. Use specification

The Usability Engineering Process - Risk



1.	Use specification
2.	User interface characteristics related to safety and potential use errors
3.	Known or foreseeable hazards and hazardous situations
4.	Hazard-related use scenarios + selection for summative testing

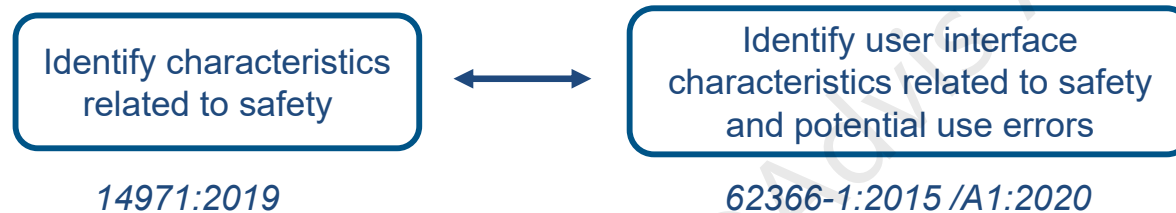
Usability – Closely Related to Risk Management Process



14971:2019

62366-1:2015/A2:2020

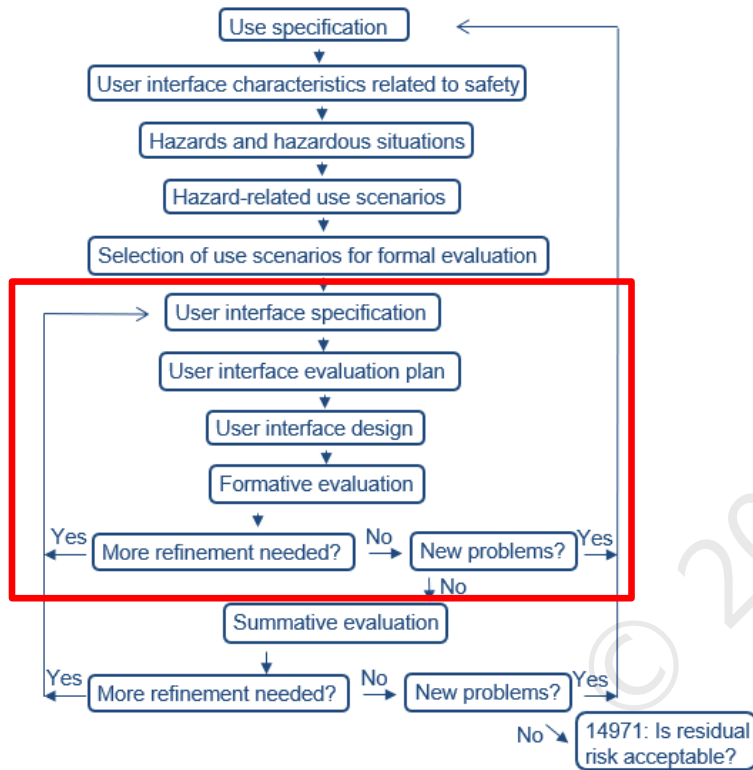
User Interface Characteristics Related to Safety and Potential Use Errors



Input

- Annex A ISO/TR 24971:2020. Questions for identification of hazards and medical device characteristics related to safety. Includes usability-related aspects.
- Experience from previous products (customer complaints, incidents, literature)
- Task analysis - a tool to identify potential use errors (IEC TR 62366-2:2016, 9.1)

The Usability Engineering Process – Design & Development



1.	Use specification
2.	User interface characteristics related to safety and potential use errors
3.	Known or foreseeable hazards and hazardous situations
4.	Hazard-related use scenarios + selection for summative testing
5.	User interface specification
6.	User interface evaluation plan (formative and summative evaluations)
7.	User interface design incl. formative evaluation

User interface evaluation plan

Formative vs Summative Usability Testing

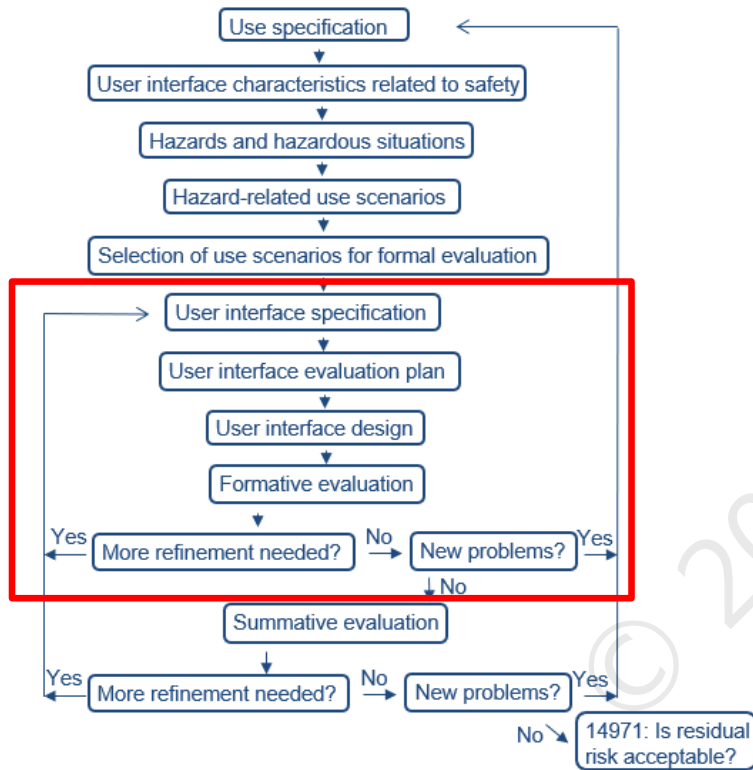
Formative usability testing

- Iteratively performed during product development
- Advisory testing using sketches, prototypes etc.
- Input to interface concepts and design (strengths, weaknesses, use errors)
- No formal acceptance criteria
- *"Good usability engineering practice suggests conducting at least one formative evaluation ahead of a summative evaluation."* IEC 62366-2:2016

Summative usability testing

- Performed at the end of product development
- Final product (or equivalent)
- Validation of the safe use of the user interface, including information for safety
- Formal acceptance criteria

The Usability Engineering Process – Design & Development



1.	Use specification
2.	User interface characteristics related to safety and potential use errors
3.	Known or foreseeable hazards and hazardous situations
4.	Hazard-related use scenarios + selection for summative testing
5.	User interface specification
6.	User interface evaluation plan (formative and summative evaluations)
7.	User interface design incl. formative evaluation

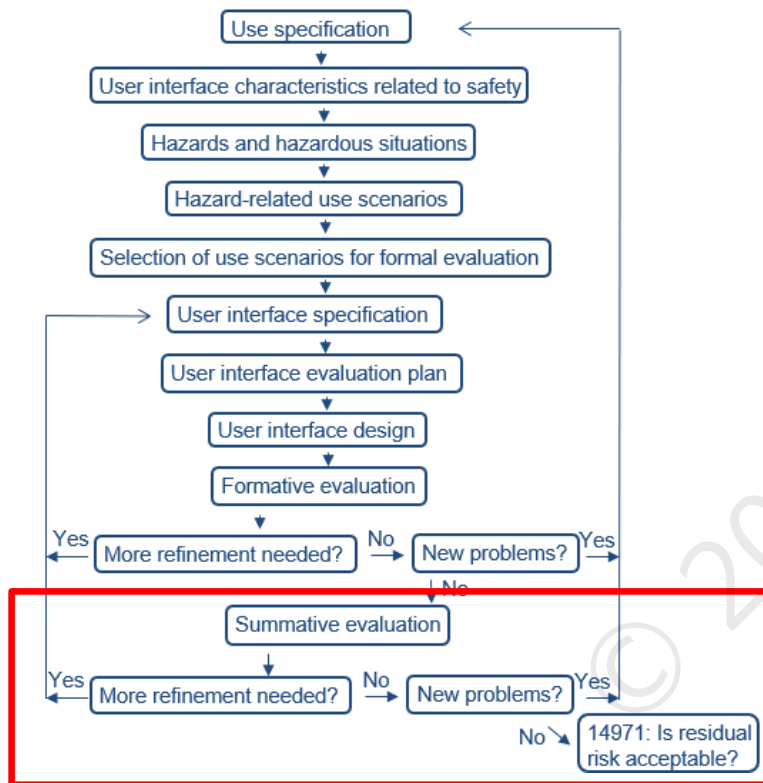
User Interface Design and Implementation



- Includes **formative testing & iterative design** and implementation
- **Accompanying documentation**
- **Training materials**
(if training is necessary for the safe use of the device)
- **Multidisciplinary team**
Suggested competences (part 1, 5.8): *users, engineers, user-interface specialists, cognitive psychologists, multimedia programmers, usability engineers, marketing and training personnel*

Guidance on design and implementation of user interface is available in IEC 62366-2:2016, chapter 15

The Usability Engineering Process – validate and evaluate



1.	Use specification
2.	User interface characteristics related to safety and potential use errors
3.	Known or foreseeable hazards and hazardous situations
4.	Hazard-related use scenarios + selection for summative testing
5.	User interface specification
6.	User interface evaluation plan (formative and summative evaluations)
7.	User interface design incl. formative evaluation
8.	Summative evaluation

Next steps



- Read the standard & guidance
- Focus on risks
- Further training
January 18 2022, 4h online training
- Additional support
<https://www.qadvis.com/our-services/>

www.qadvis.com

QA *advis*

Your
Regulatory
Partner

© 2021 QAdvis AB